



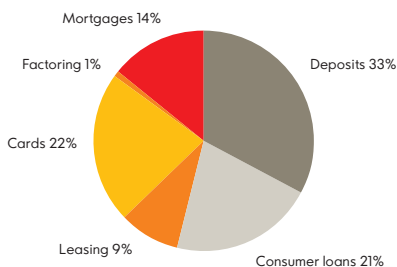
# Facts and figures 2011

**IKANO**

## Business Area Finance

Business volume:

EUR 4.6 billion



Business Area Finance provides consumer finance services such as store cards, loyalty cards, leasing, factoring, personal loans and saving accounts.

### Where we operate:

Sweden, Denmark, Norway, Finland, Germany, Austria, Poland, UK, Russia

### Facts at a glance:

(Open accounts)

Private label cards:

8.6 million

Bonus/loyalty cards:

9.5 million

International credit cards:

700,000

Loans: 500,000

Deposit accounts: 160,000

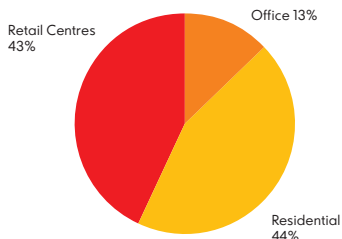
Leasing contracts: 50,000



---

## Business Area Real Estate

Market value of property:  
EUR 1.3 billion



Business Area Real Estate is a long-term real estate owner and project developer in the business segments: retail centres, office and residential.

### Where we operate:

Sweden, Denmark, Norway,  
Finland

### Facts at glance

No of tenant: 5,200  
Total rental income: 78 MEUR  
Total contract revenue: 70 MEUR  
Total m<sup>2</sup> under management:  
646,000

### Retail Centres

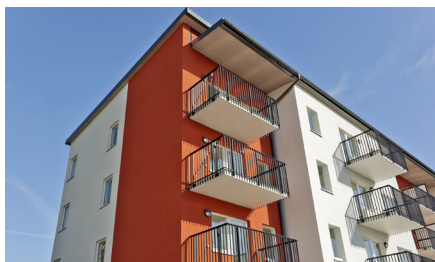
3 shopping centres: Linköping,  
Sundsvall, Västerås – Sweden  
4 Retail parks: Haparanda, Kalmar,  
Örebro, Stockholm – Sweden  
No. of visitors to shopping centres:  
15 million  
Shopping centres and retail parks  
total m<sup>2</sup>: 223,000  
Projects under construction m<sup>2</sup>:  
124,000

### Office

Lund, Malmö – Sweden  
No. of offices: 110 lease agreements  
for 10 properties  
Total m<sup>2</sup>: 63,000  
Projects under construction m<sup>2</sup>: 20,000

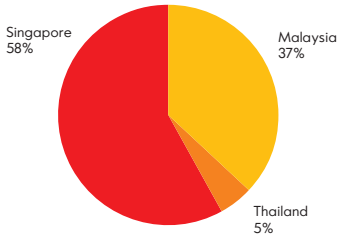
### Residential

Stockholm, Västerås, Malmö,  
Helsingborg, Lund – Sweden  
No. of apartments: 4,700  
Total m<sup>2</sup>: 360,000  
Apartments under construction: 650



## Business Area Retail Asia

Turnover: EUR 287 million



Business Area Retail Asia owns and operates IKEA stores and shopping centres in Southeast Asia.

### Where we operate:

Singapore, Malaysia and Thailand  
(opened Nov 2011)

### Facts at a glance:

#### IKEA

No. of IKEA catalogues released:

1.25 million (Singapore)

1.1 million (Malaysia)

1.2 million (Thailand)

No. of visitors:

7.3 million (Singapore)

5.7 million (Malaysia)

0.8 million (Thailand)

No. of children to Småland:

180,600 (Singapore)

120,000 (Malaysia)

6,600 (Thailand)

No. of meatballs sold: 15.8 million

(in all four IKEA stores)

### Shopping centre

IPC Shopping Centre Malaysia

No of visitors to IPC Shopping Centre:

8.5 million

Total m<sup>2</sup>: 37,000 (72,000 m<sup>2</sup>  
including IKEA store)

Megabangna Shopping Centre, Thailand  
opened 5 May 2012

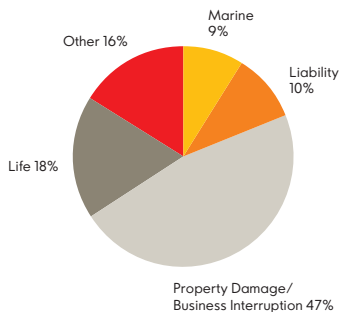
Total m<sup>2</sup>: 150,000

Projected annual visitors: minimum  
40 million people



---

**Business Area Insurance**  
Gross Premiums Written:  
EUR 96 million



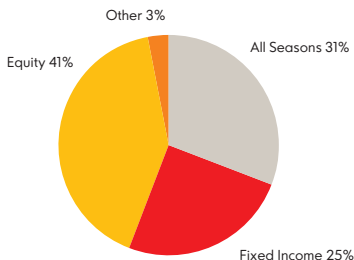
Business Area Insurance delivers global life and non-life insurance solutions to corporate clients. Furthermore, through our Swedish retail insurers we enhance our partners' offering with tailor made insurance products and deliver employee benefit insurance

**Where we operate:**

Global operations with offices in Sweden and Luxembourg

---

**Business Area Asset Management**  
Asset under Management:  
EUR 4.3 billion



Business Area Asset Management provides asset management to private and institutional investors

**Where we operate:**

Luxembourg



---

## **Ikano Group**

Ikano S.A.  
1, rue Nicolas Welter  
L-2740 Luxembourg  
(P.O. Box 229, L-2012 Luxembourg)  
Tel +352 26 44 22  
Fax +352 26 44 22 100  
[www.ikanogroup.com](http://www.ikanogroup.com)

## **Finance**

Ikano Bank SE  
Scheelevägen 15  
SE-223 70 Lund, Sweden  
Tel +46 (0)46 286 36 50  
Fax +46 (0)46 286 36 51

## **Real Estate**

Ikano Real Estate AB  
Sölvegatan 41  
SE-223 70 Lund, Sweden  
Tel +46 (0)46 286 47 00  
Fax +46 (0)46 286 47 01  
[www.ikanofastigheter.se](http://www.ikanofastigheter.se)

## **Retail Asia**

Ikano Pte. Ltd.  
60 Tampines North Drive 2  
Singapore 528764  
Singapore  
Tel +65 6786 6868  
Fax +65 6260 0913  
[www.ikea.com.sg](http://www.ikea.com.sg)

## **Insurance**

Ikano Re S.A.  
1, rue Nicolas Welter  
L-2740 Luxembourg  
(P.O. Box 229, L-2012 Luxembourg)  
Tel +352 26 44 22  
Fax +352 26 44 22 400

## **Asset Management**

Ikano Fund Management S.A.  
1, rue Nicolas Welter  
L-2740 Luxembourg  
(P.O. Box 229, L-2012 Luxembourg)  
Tel +352 26 44 22  
Fax +352 26 44 22 100  
[www.ikanofm.lu](http://www.ikanofm.lu)

---

## **Ikano Group Board**

### **Board of Directors**

Peter Kamprad  
Jonas Kamprad  
Mathias Kamprad  
Håkan Thylen  
Björn Bayley  
Per Karlsson  
Jens Engwall  
Eva Cederbalk  
Arja Taaveniku, CEO

### **Senior Advisor**

Ingvar Kamprad

## **Ikano Group 2011**

### **Employees by business area**

Head office	50
BA Finance	983
BA Real Estate	227
BA Retail Asia	1830
BA Insurance	36
BA Asset Management	17
Dendro	448

**The Group total: 3591**